



GAT MONTHLY MEMBERSHIP PROGRESS REPORT

Results as of: 5/31/2022

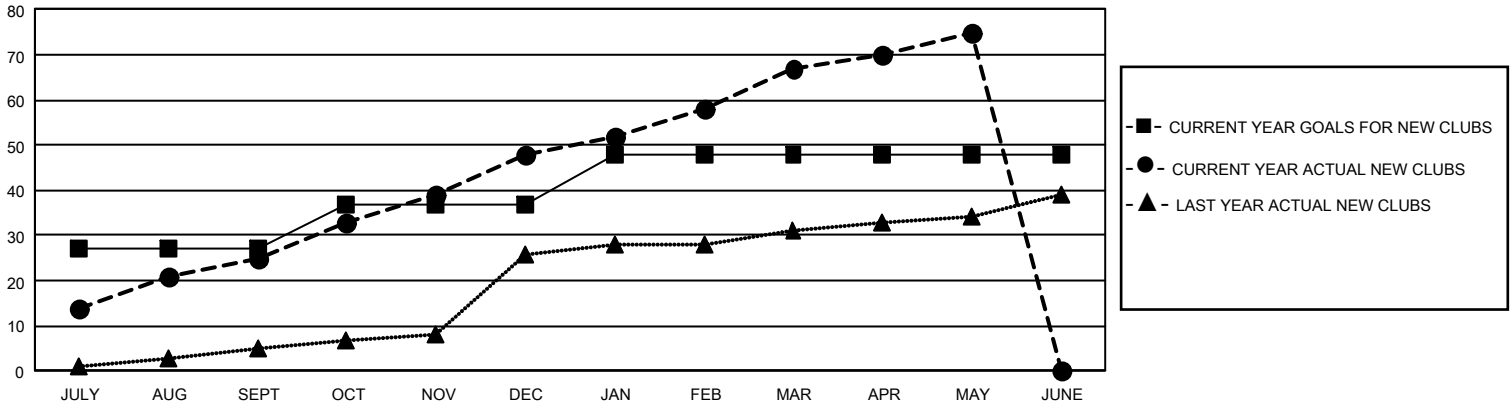
GMT Constitutional Area 6, Group B

REPORT DOES NOT INCLUDE CLUBS IN UNDISTRICTED AREAS.

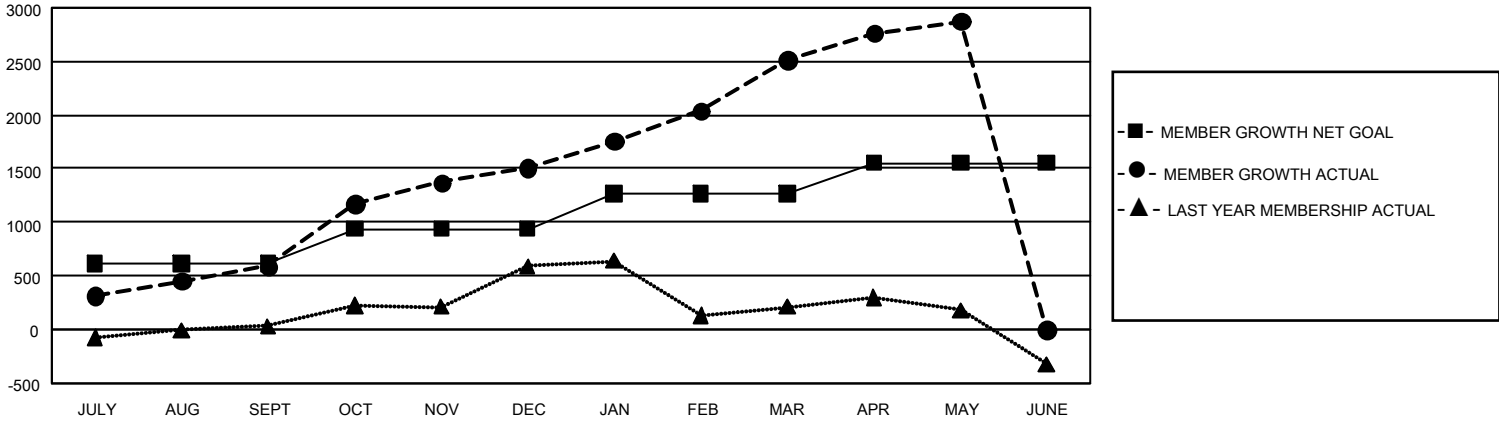
Clubs			
RESULTS FOR 2021-2022			
QUARTER	NEW CLUB GOAL	NEW CLUBS	DROPPED CLUBS
JULY/AUG/SEPT	81	25	7
OCT/NOV/DEC	30	23	5
JAN/FEB/MAR	33	19	0
APR/MAY/JUNE	0	8	0

Members			
RESULTS FOR 2021-2022			
QUARTER	MEMBER GROWTH NET GOAL	MEMBER GROWTH ACTUAL	DROPPED MEMBERS ACTUAL (including transfers)
JULY/AUG/SEPT	610	1,135	436
OCT/NOV/DEC	329	1,489	519
JAN/FEB/MAR	324	1,253	153
APR/MAY/JUNE	290	703	291

GOALS AND ACTUAL NEW CLUBS CUMULATIVE



GOALS AND ACTUAL MEMBERS CUMULATIVE



DROPPED CLUBS: 12	455 CLUBS OF 634 ADDED 1 OR MORE NEW MEMBERS	GENDER DISTRIBUTION	
		MALE 12,910 (74.29%) FEMALE 4,465 (25.69%) NON BINARY 0 (0.00%) PREFER NOT TO ANSWER 2 (0.01%)	
DROPPED MEMBERS		CLICK HERE FOR CUMULATIVE MEMBERSHIP DATA	
DECEASED 89 CLUB CANCELLED 177 OTHER 1,134 TOTAL 1,400	TOTAL FAMILY UNIT MEMBERS 6,517 FAMILY MEMBERS PAYING HALF DUES 3,712		